

KLM Crew Training Centre



KLM Building 203/204, training center for pilots and cabincrew, has been renewed. For each room a Forbo floor has been chosen starting at the entrance where you can see a Coral Welcome. Marmoleum Walton and Striato are used in the flight safety hall with 2 brand new flight simulators, the offices and corridors.

Project name KLM Crew Training Center

Location Schiphol

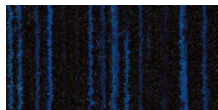
Architect Sander Griffioen

Flooring contractor Maasdam Projectinrichting

Photographer Michael van Oosten

Date of completion juni 2019

Used Products



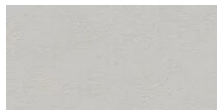
Coral Welcome
blue velvet



Marmoleum
Concrete
blue shimmer



Marmoleum
Walton
petrol



Marmoleum Solid
2024 alias
titanium



Marmoleum
Striato Original
withered prairie

